

The background is a light blue gradient. It features stylized coral in teal (top left), orange (top right), and yellow (bottom left). There are several light blue circles of varying sizes representing bubbles. An orange starfish is positioned in the upper center. A teal, worm-like creature with two dark blue eyes is at the bottom right.

Ocean Ecosystems

Coral Reef

- High Biodiversity
- Thousands of coral species
- “Rainforests of the seas”



Kelp Forests

- Can grow up to 18 inches a day!
 - Up to 150 feet long
- Brown Algae
- Provide food and shelter
 - Nurseries
- We use them too!





Mangrove Forests

- Trees that grow in saltwater
- ~80 species
- Tropical regions

Rocky Intertidal

- Intertidal: “Between tides”
- Ecosystem found on marine shorelines where organisms live between tides.
- Sea stars, snails, algae, and others!



Salt Marsh

- Georgia Coast!
- Vegetation at the intersection of land and sea
- Protects the shoreline from erosion



Oyster Reefs

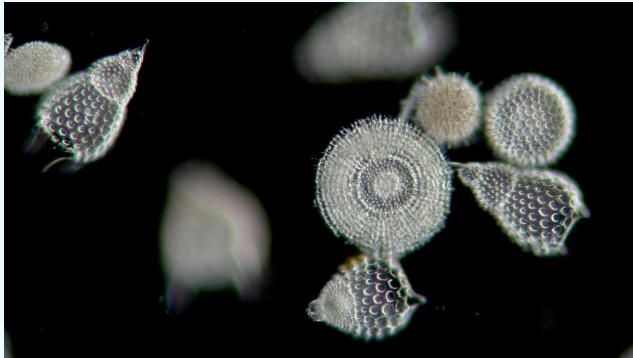
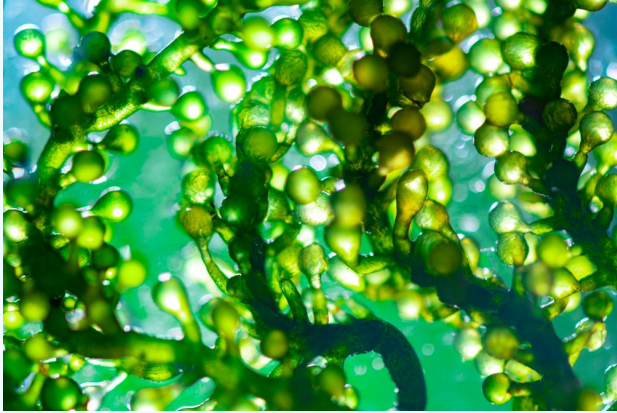
- Georgia Coast!
- Molluscs at the water's edge
- Home to a wide variety of invertebrate species
- Food for a wide variety of fish, crabs, birds and sharks!!





Salt Marsh Food Webs

Primary Producers



Herbivores



Carnivores



Detritivores

